



**DEVCOM**  
SOLDIER  
CENTER



# U.S. ARMY COMBAT CAPABILITIES DEVELOPMENT COMMAND SOLDIER CENTER

Joint Standardization Board –  
Expeditionary Shelters and Basing Equipment  
Presentation to Defense Standardization Program Conference

**6 AUGUST 2024**

CONNIE MILES-PATRICK  
TEAM LEADER, SYSTEM INTEGRATION AND SUSTAINMENT TEAM  
US ARMY DEVCOM SOLDIER CENTER



# JSB-ESBE MISSION



Over 100 volunteers from across DoD organizations, experts in expeditionary shelters and basing equipment (ESBE), serving as an advisory group to the Service Headquarters and Joint Staff for all matters relating to ESBE.

## **Two fundamental functions:**

- minimize duplication of effort across the Services with regard to tactical shelters and expeditionary basing equipment development and acquisition;
- advocate the use of standard tactical shelters and expeditionary basing equipment to promote interoperability, improve supportability, and reduce life cycle cost.

# JSB-ESBE TIMELINE



**2021 – Present - Focus on Extreme Environments**

**2018 - Joint Standardization Board - Expeditionary Shelters Basing Equipment \***

**2017 - Began discussion to combine JOCOTAS and JEBWG**

**2015 - JSB for Tactical Shelter and Expeditionary Basing Systems**

**2012 - JOCOTAS expands to include Contingency Basing**

**2009 – JOCOTAS expands to include Shelter Technology**

**2006 – JOCOTAS became a Joint Standardization Board**

**1994 – Soft wall shelters were added**

**1975 - Joint Committee for Tactical Shelters (rigid wall shelters)**



# JSB-ESBE STANDARD/CATALOG EQUIPMENT



- **Rigid Wall Shelters:** 18
  - Army: 10
  - Air Force: 1
  - Navy: 7
- **Soft Wall Shelter:** 19
  - Army: 10
  - Air Force: 4
  - Marine Corps: 5
- **Shelter Camouflage**
- **Shelter: Solar Shades**
- **Environmental Control Units**
  - Powered/Non-Powered
  - Air Conditioners
- **Basing Equipment**
  - Kitchens
  - Laundries
  - Showers
  - Latrines
  - Lights (AF)



# RECENT MEETING HISTORY

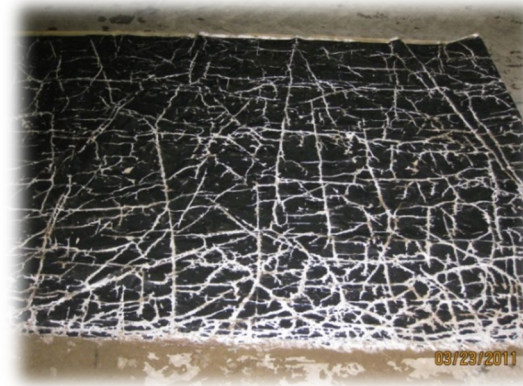
- 2018 APR – DEVCOM Soldier Center, Natick, MA
- 2018 OCT – Base Camp Integration Lab, Fort Devens, MA
- 2019 APR – Port Hueneme, CA (Naval Facilities)
- 2019 OCT – Fort Belvoir, VA
- 2020 APR – Virtual (MS Teams)
- 2020 NOV – Virtual (MS Teams)
- 2021 APR – Virtual (MS Teams)
- 2021 NOV – Fort Wainwright, AK
- 2022 APR – Virtual (MS Teams)
- 2022 NOV – Port Hueneme, CA
- 2023 APR – Future Capability Integration Lab Fort Devens & DEVCOM Soldier Center Natick, MA
- 2023 NOV – Air Force Civil Engineering Center Tyndal AFB, FL
- 2024 APR – Marine Depot Maintenance Command, Albany, GA NAVAIR
- \*2024 NOV – Stafford, VA



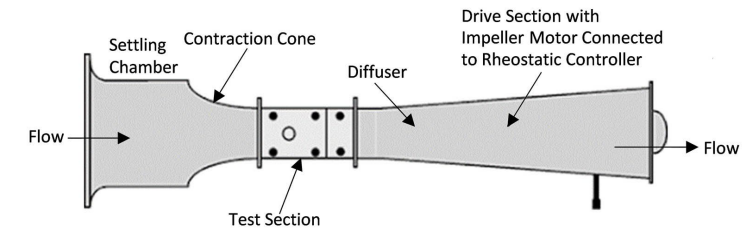
# JSB-ESBE INTEGRATED PRODUCT TEAMS (IPT)



- Extreme Environment (Arctic)



Wind Whip Test



- MIL-PRF-44103 (1996) – Cloth, Fire, Water and Weather Resistant

- Charter & Operating Procedures Update



- Current spec MIL-PRF-44103 does not fully address cold weather testing- only tests:
  - Cold Crack at -20F
  - Stiffness at -20F
- Deficiencies:
  - Not cold enough: -20F, needs to be -65F
  - Cold crack does not predict performance well
  - Additional testing at temperature should also be added
  - Need more robust testing in cold weather to simulate real world loading





# WHERE IS JSB-ESBE GOING

## 2024 & Beyond:

- Continue Bi-Annual Meetings
- Foster continued collaboration
- Promote:
  - Modernization of shelter materials, technology, and systems
  - Utilization of existing commercial technologies to reduce life cycle costs.
- Maintain relevance to the user community
- Update MIL-PRF-44103 and establish a Soft Wall Shelter Qualified Products List (QPL)
- Provide expertise and guidance for Environmental Control Unit's Refrigerants

# THANK YOU.

Connie Miles-Patrick  
Team Leader  
System Integration & Sustainment Team  
(508) 206-3650  
[connie.e.miles-patrick.civ@army.mil](mailto:connie.e.miles-patrick.civ@army.mil)



